

Karte 157

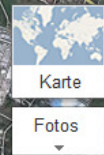


ljubljana



Horst Gunkel

+ Mitteilen



Karte
Fotos

500 ft
2000 ft

Windows taskbar with icons for Start, Internet Explorer, Firefox, Word, PowerPoint, OneNote, Skype, and system tray showing time 20:14 and date 20.04.2012.

Karte 158



ljubljan

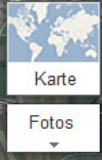


Horst Gunkel

+ Mitteilen



Übernachtungsquartier der Zeit
nach der 50. bis nach der 55.
Etappe: H₂ostel



Karte 159



ljubljan



Horst Gunkel

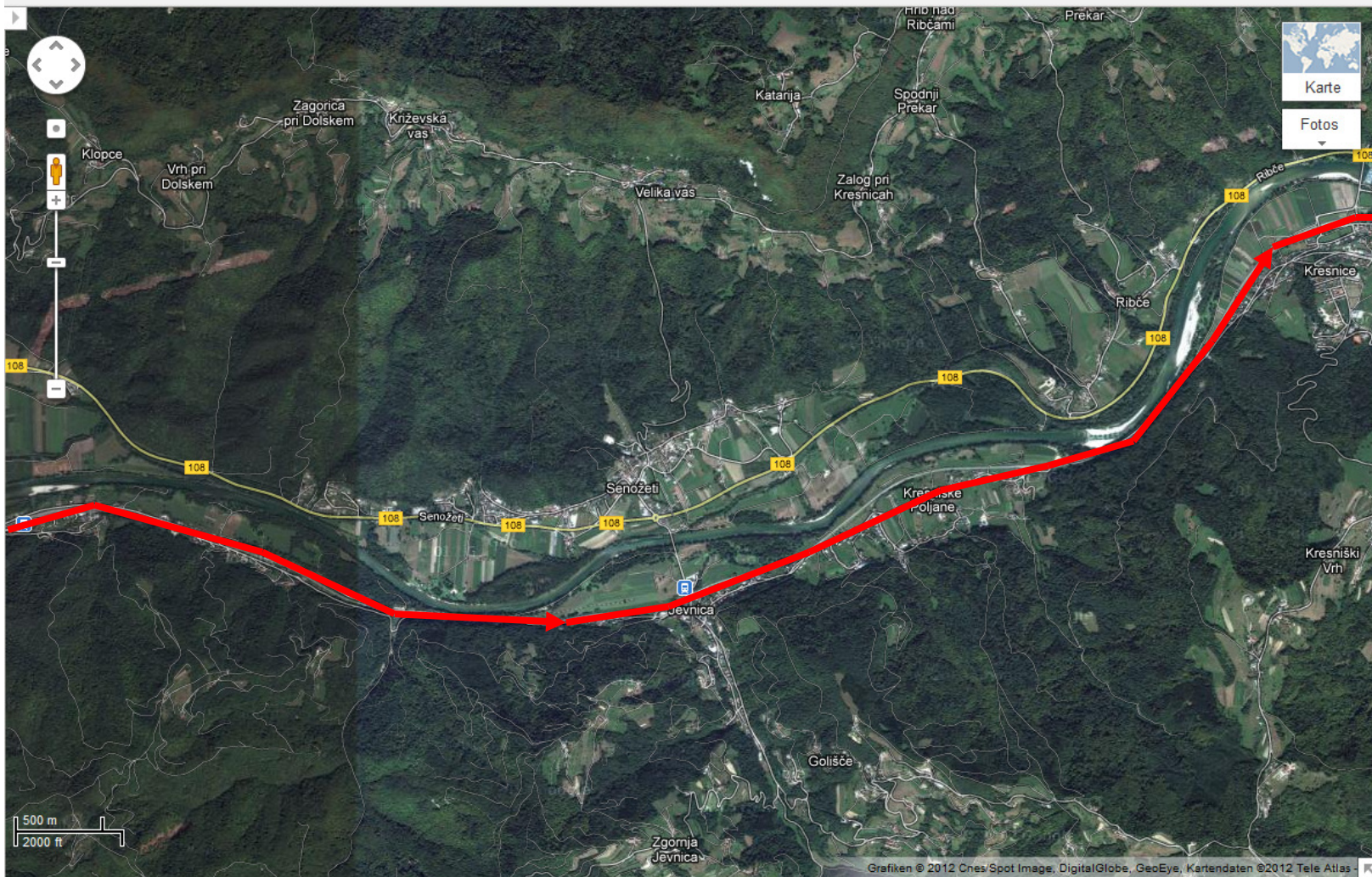
+ Mitteilen



20:15

20.04.2012

Karte 160



Windows taskbar with icons for:

- Internet Explorer
- Microsoft Word
- Microsoft PowerPoint
- Firefox
- Google Chrome
- Skype
- System tray icons: Volume, Network, Power
- System clock: 20:16, 20.04.2012

Karte 161

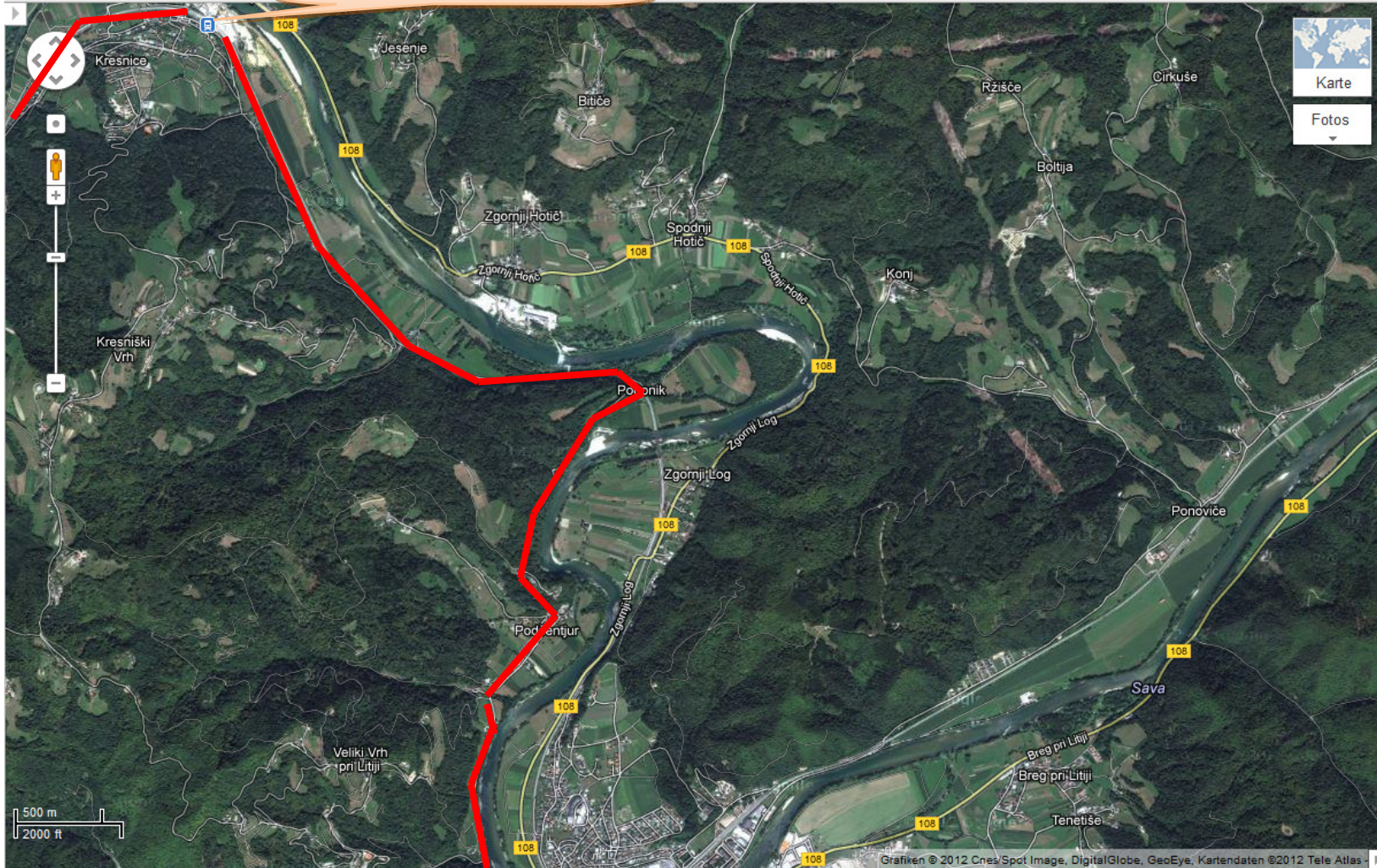
Google

ljubljana Ende der 51. Etappe



Horst Gunkel

+ Mitteilen



Karte
Fotos

Windows taskbar with icons for Internet Explorer, Word, PowerPoint, Firefox, and various system utilities. System clock shows 20:17 on 20.04.2012.

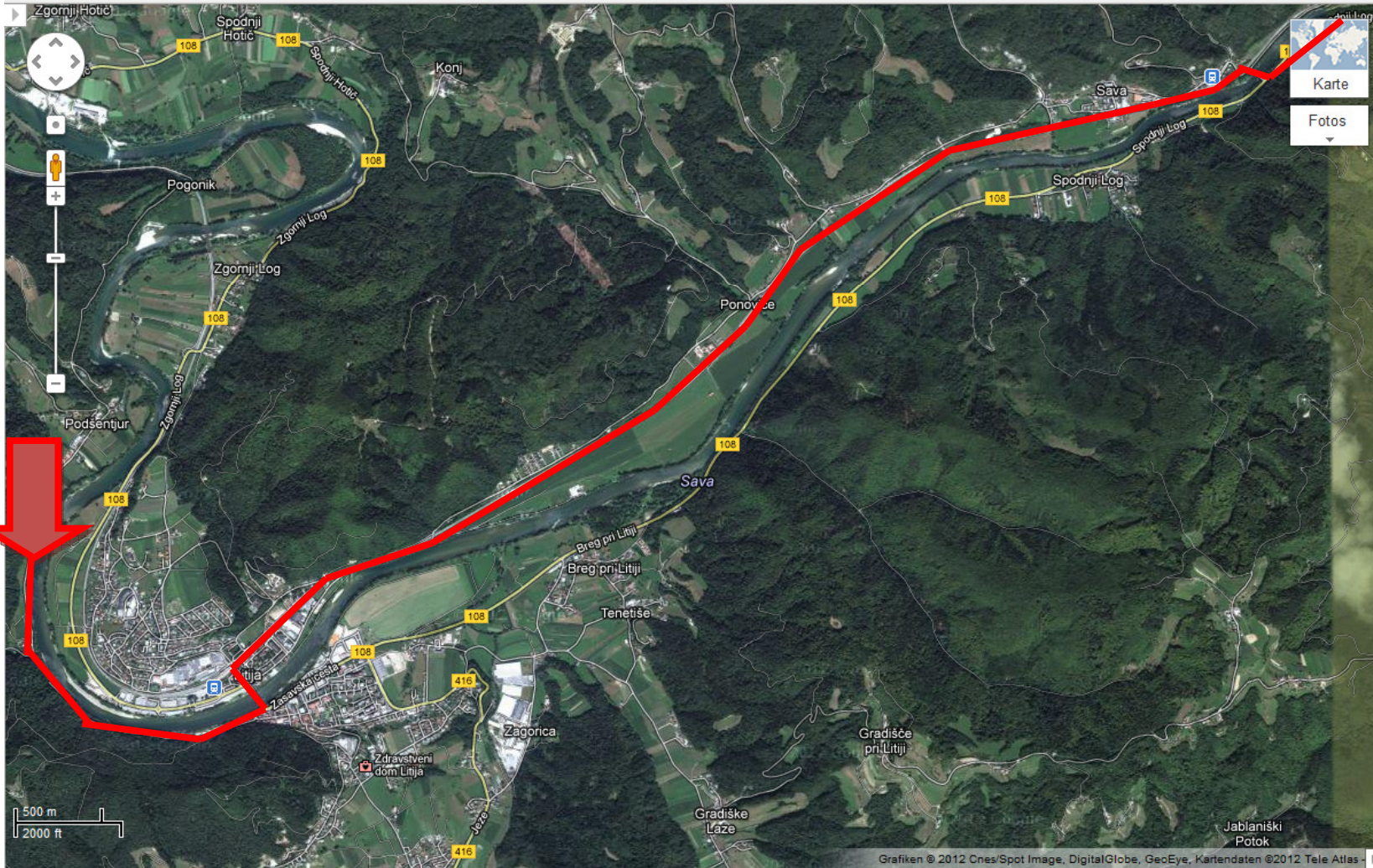
Karte 162



ljubljana

Horst Gunkel

+ Mitteilen



Windows taskbar with icons for:

- Internet Explorer
- Microsoft Word
- Microsoft PowerPoint
- Firefox
- Opera
- Skype
- Weather
- System tray icons: Volume, Network, Power
- System clock: 20:18, 20.04.2012

ljubljana - Google Maps - Mozilla Firefox

Datei Bearbeiten Ansicht Chronik Lesezeichen Extras Hilfe

Wandern ... Wetter Ge... Wetter Ge... GMX GMX - E-... uO: Meine W... Wetterber... KROATIEN... Home - Ec... ljubljana... x +

maps.google.de

MaO kus Gelnhausen

+Horst Suche Bilder Maps Play YouTube News Mail Docs Kalender Mehr -

Google ljubljana

Karte 163

Ende der 52. Etappe

The image shows a satellite map of the Sava river valley in Slovenia. A red line traces a route along the river, starting from the bottom left and moving towards the top right. A callout box with a yellow background and black text points to a specific location on the route, labeled 'Ende der 52. Etappe'. The map includes various geographical features, roads, and place names. A scale bar in the bottom left corner indicates 500 meters and 2000 feet. The browser interface at the top shows the URL 'maps.google.de' and several open tabs. The Windows taskbar on the right side of the screen displays various application icons and the system clock showing 20:18 on 20.04.2012.

500 m
2000 ft

Grafiken © 2012 Cnes/Spot Image, DigitalGlobe, GeoEye, Kartendaten ©2012 Tele Atlas

Karte 164

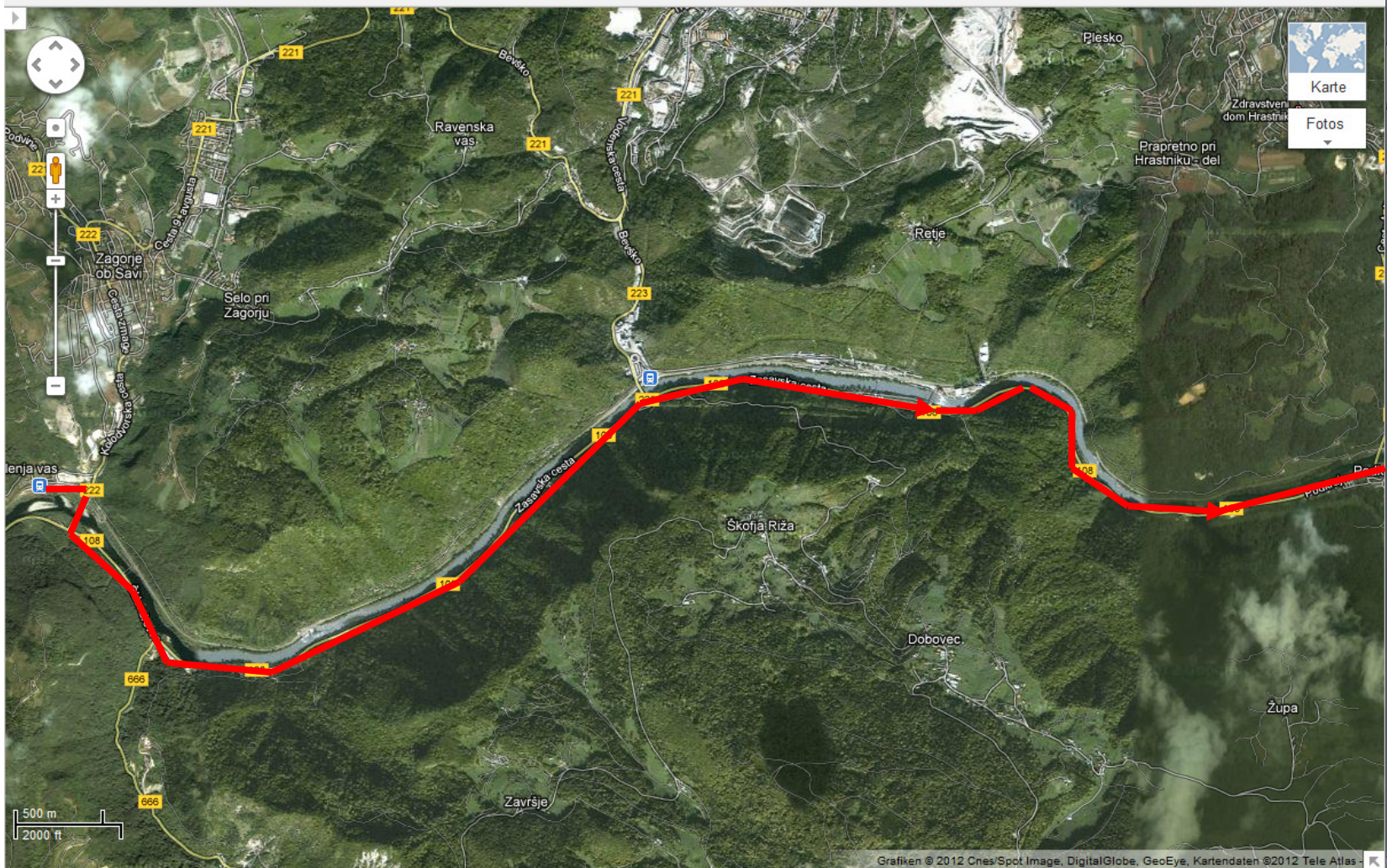


ljubljana



Horst Gunkel

+ Mitteilen



- Windows Start button
- Microsoft Word icon
- Microsoft PowerPoint icon
- Firefox icon
- Internet Explorer icon
- Skype icon
- Weather icon
- System tray icons: Volume, Network, Power
- System clock: 20:19, 20.04.2012

Karte 165

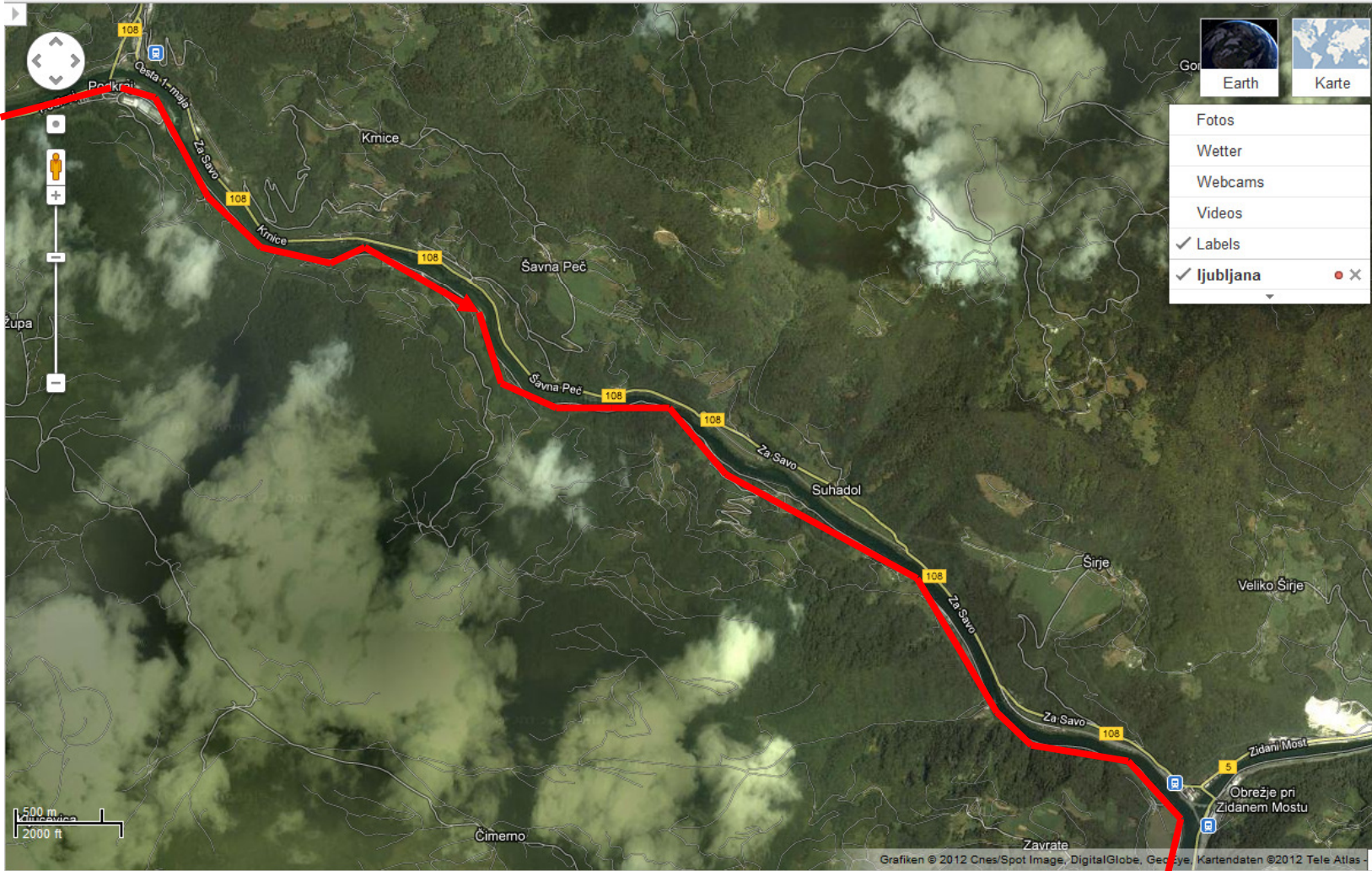


ljubljana



Horst Gunkel

+ Mitteilen



Earth Karte

- Fotos
- Wetter
- Webcams
- Videos
- ✓ Labels
- ✓ ljubljana

Windows taskbar with icons for Firefox, Word, PowerPoint, File Explorer, Internet Explorer, Skype, and system tray showing time 20:20 and date 20.04.2012.

Karte 166

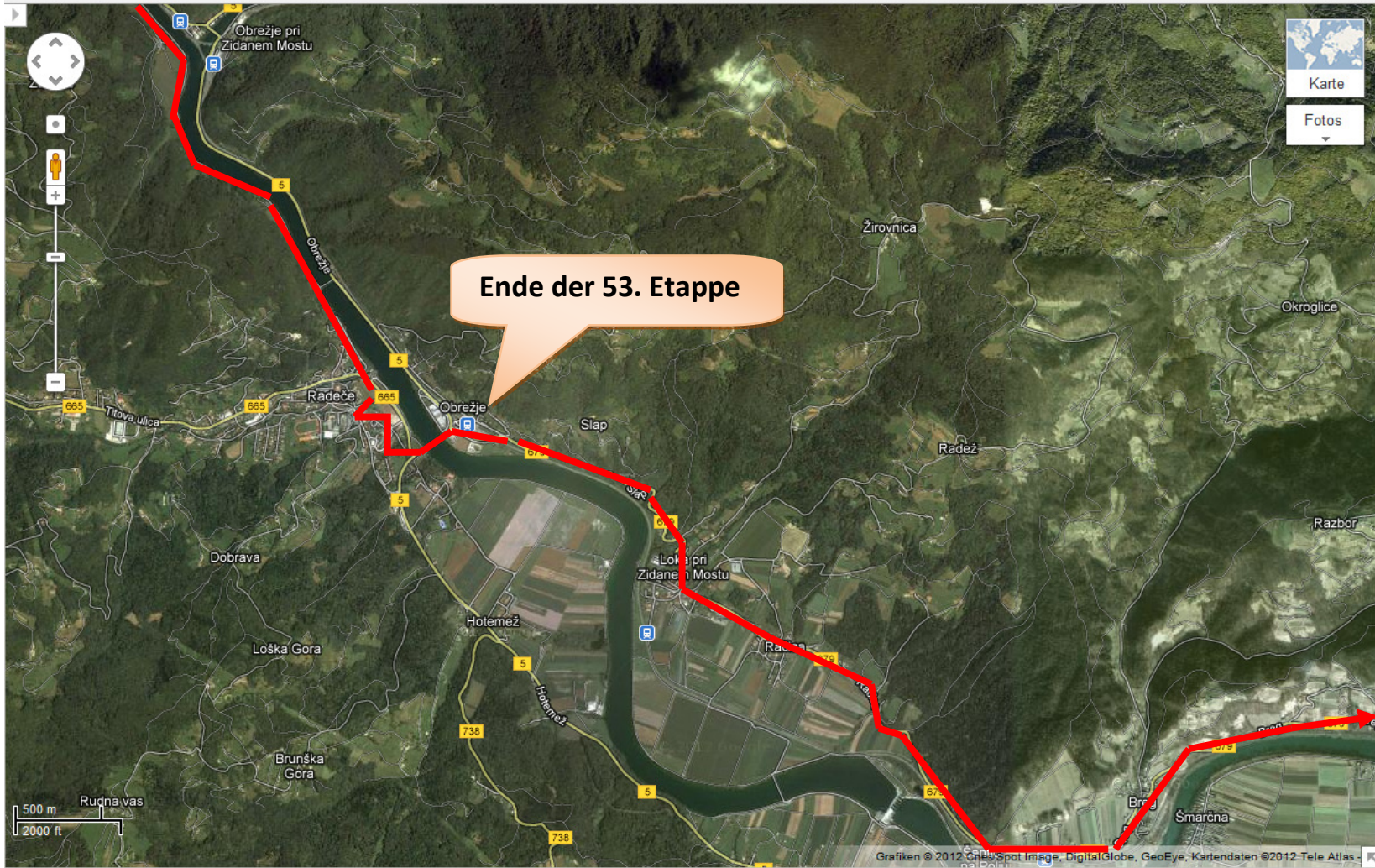


ljubljana



Horst Gunkel

+ Mitteilen



Ende der 53. Etappe

- Windows Start button
- Microsoft Office Word icon
- Microsoft Office PowerPoint icon
- Firefox icon
- Internet Explorer icon
- Skype icon
- Weather icon
- System tray icons: Volume, Network, System clock (20:20), Date (20.04.2012)

ljubljana - Google Maps - Mozilla Firefox

Datei Bearbeiten Ansicht Chronik Lesezeichen Extras Hilfe

Wandern ... Wetter Ge... Wetter Ge... GMX GMX - E... MO: Meine W... Wetterber... KROATIEN... Home - Ec... ljubljana...

maps.google.de

MaO kus Gelnhausen

+Horst Suche Bilder Maps Play YouTube News Mail Docs K... er Mehr

Google ljubljana

Horst Gunkel + Mitteilen

Karte 167

Novi Grad, Vrhovo, Log pri Vrhovem, Prapretno, Sentjur na Polju, Vrhovo, Breg, Smarčna, Kompolje, Mrtovec, Ledina, Drožanje, Orešje, Boštanj, Dolenji Boštanj, Sevnica, Zdravstveni dom Sevnica, Jablanica, Vrh pri

500 m, 2000 ft

Grafiken © 2012 Cnes/Spot Image, DigitalGlobe, GeoEye, Kartendaten © 2012 Tele Atlas

20:21
20.04.2012

Karte 168

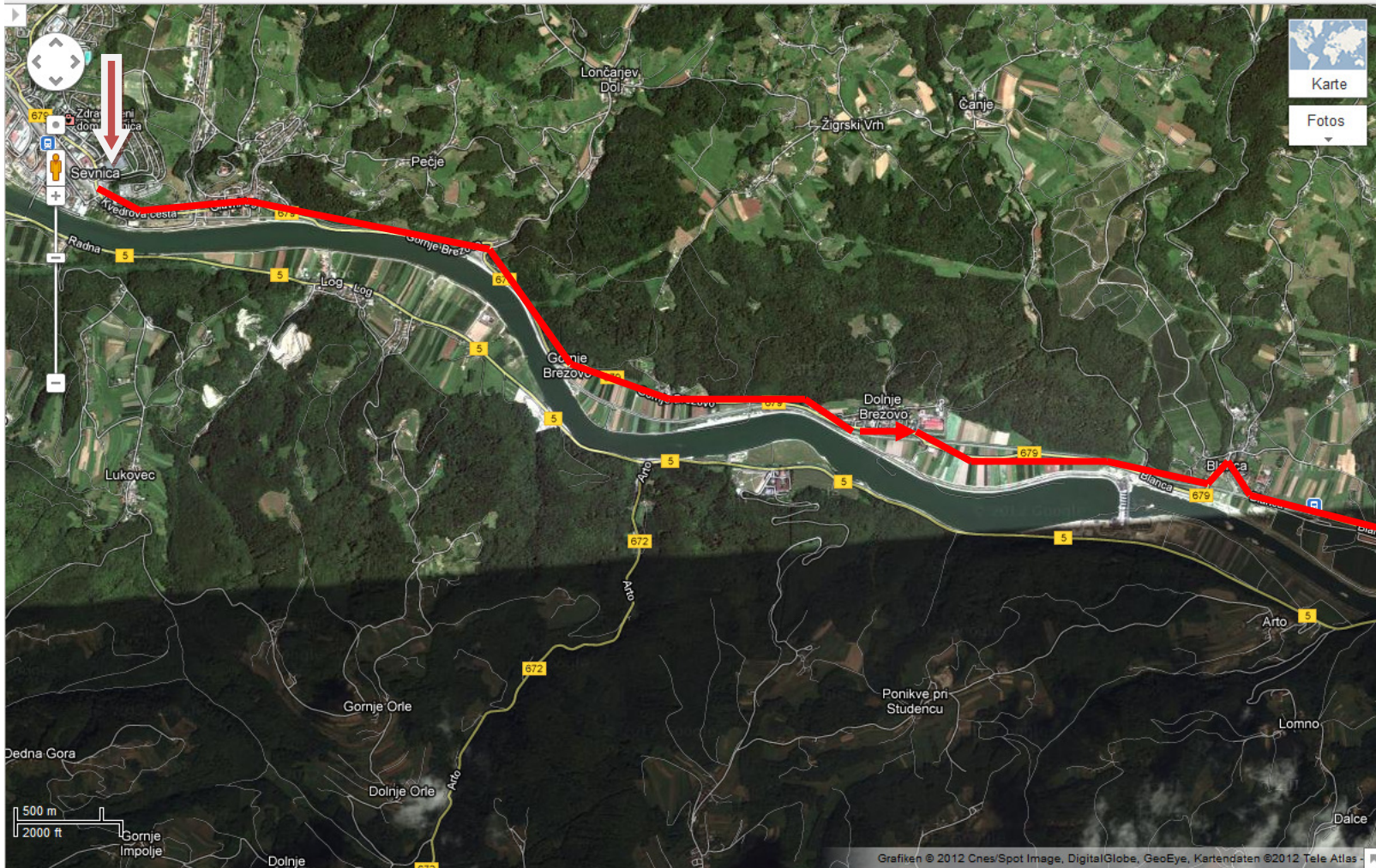


Ijubljana



Horst Gunkel

+ Mitteilen



Windows taskbar with icons for:

- Windows Start button
- Microsoft Office Word
- Microsoft Office PowerPoint
- Microsoft Office Excel
- Internet Explorer
- Skype
- Weather
- System tray icons: Volume, Network, Date/Time (20:22, 20.04.2012)

Karte 169

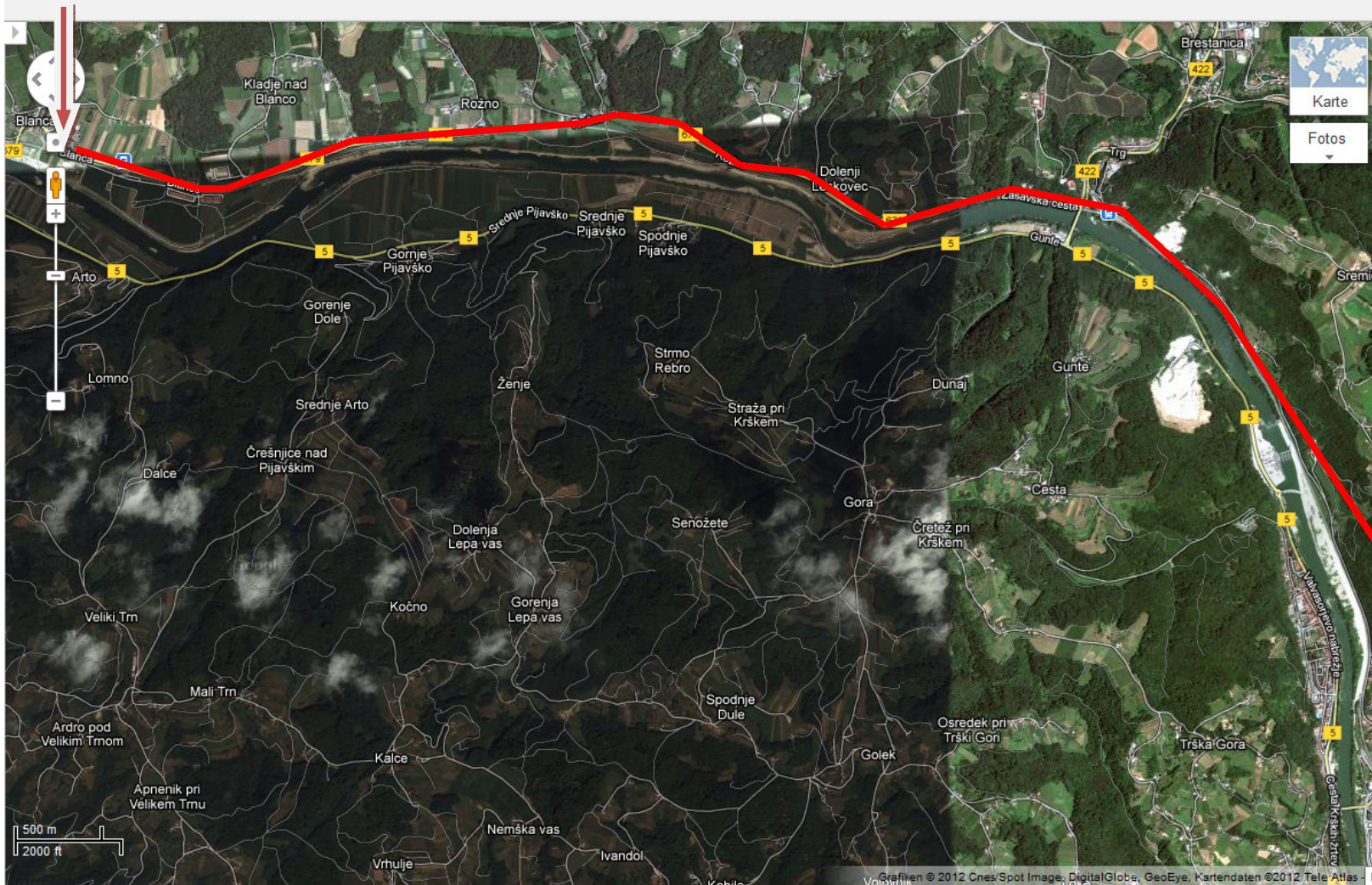


ljubljana



Horst Gunkel

+ Mitteilen



- Windows logo
- Excel icon
- Word icon
- PowerPoint icon
- Foxit Reader icon
- Internet Explorer icon
- Safari icon
- Weather icon
- Taskbar icons: Volume, Network, System tray
- System clock: 20:23, 20.04.2012

Karte 170

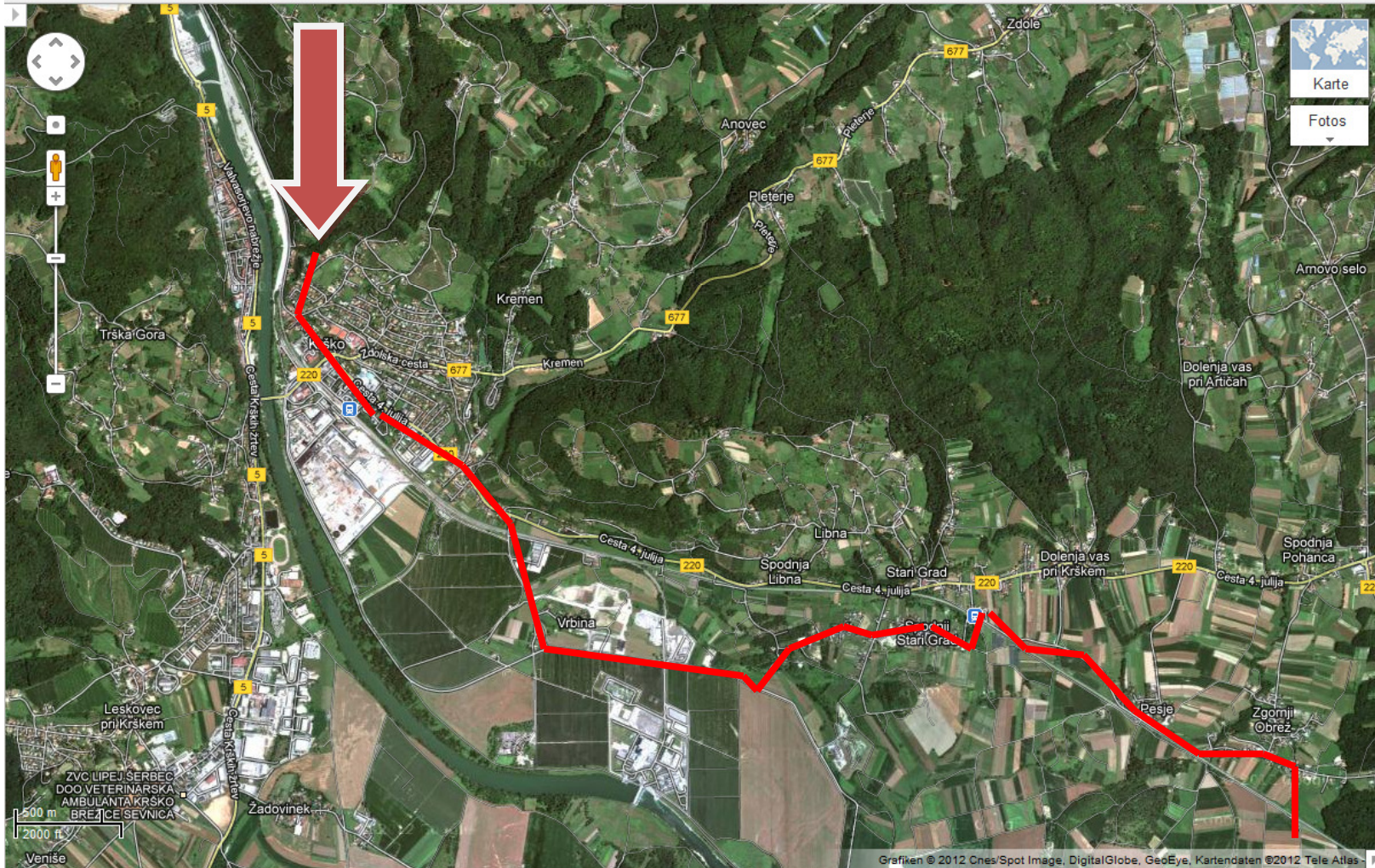


ljubljan



Horst Gunkel

+ Mitteilen



Karte
Fotos

Windows taskbar with icons for Internet Explorer, Office, Firefox, and system tray showing time 20:24 and date 20.04.2012.

Karte 171

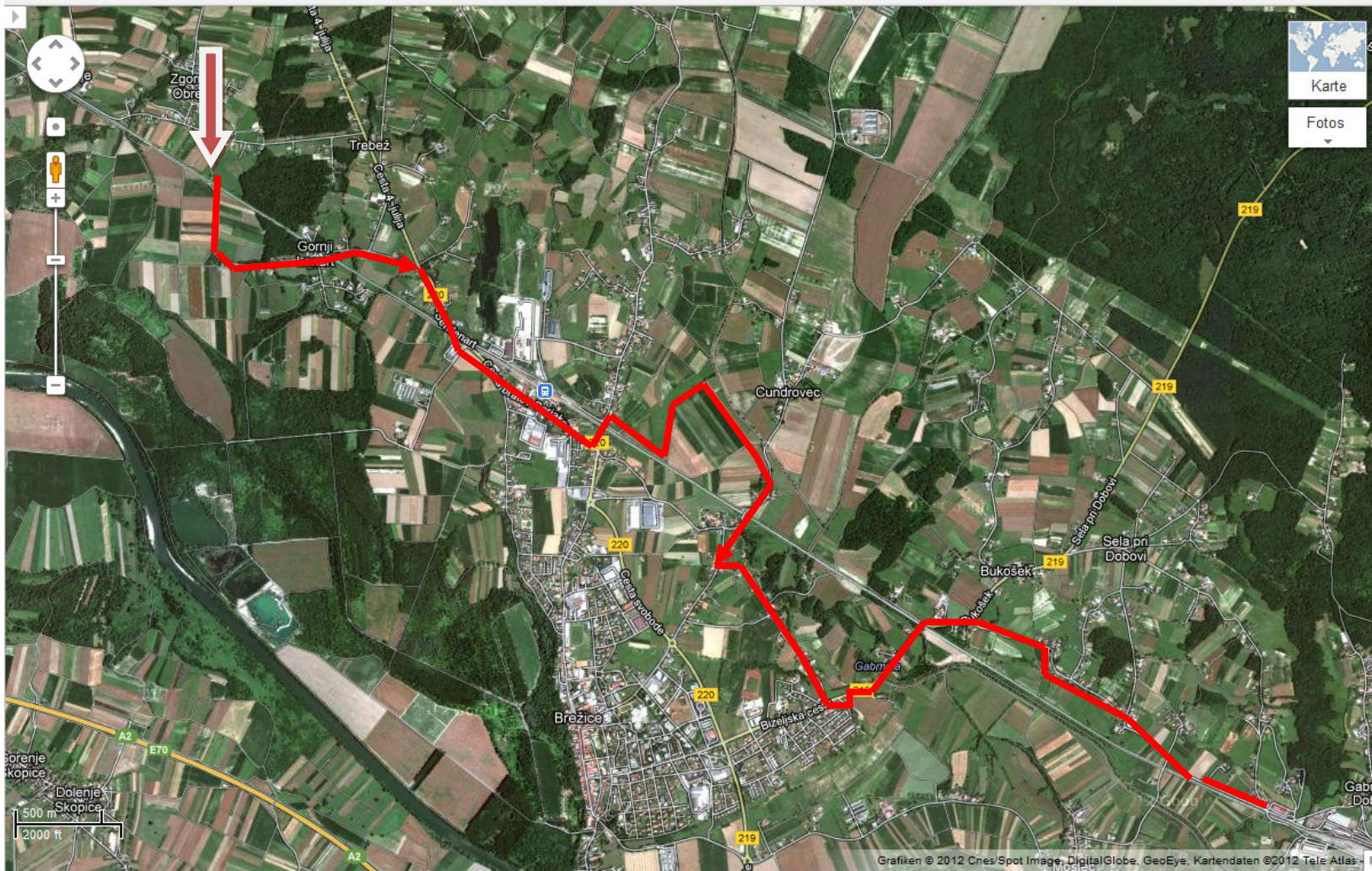
Google

ljubljana



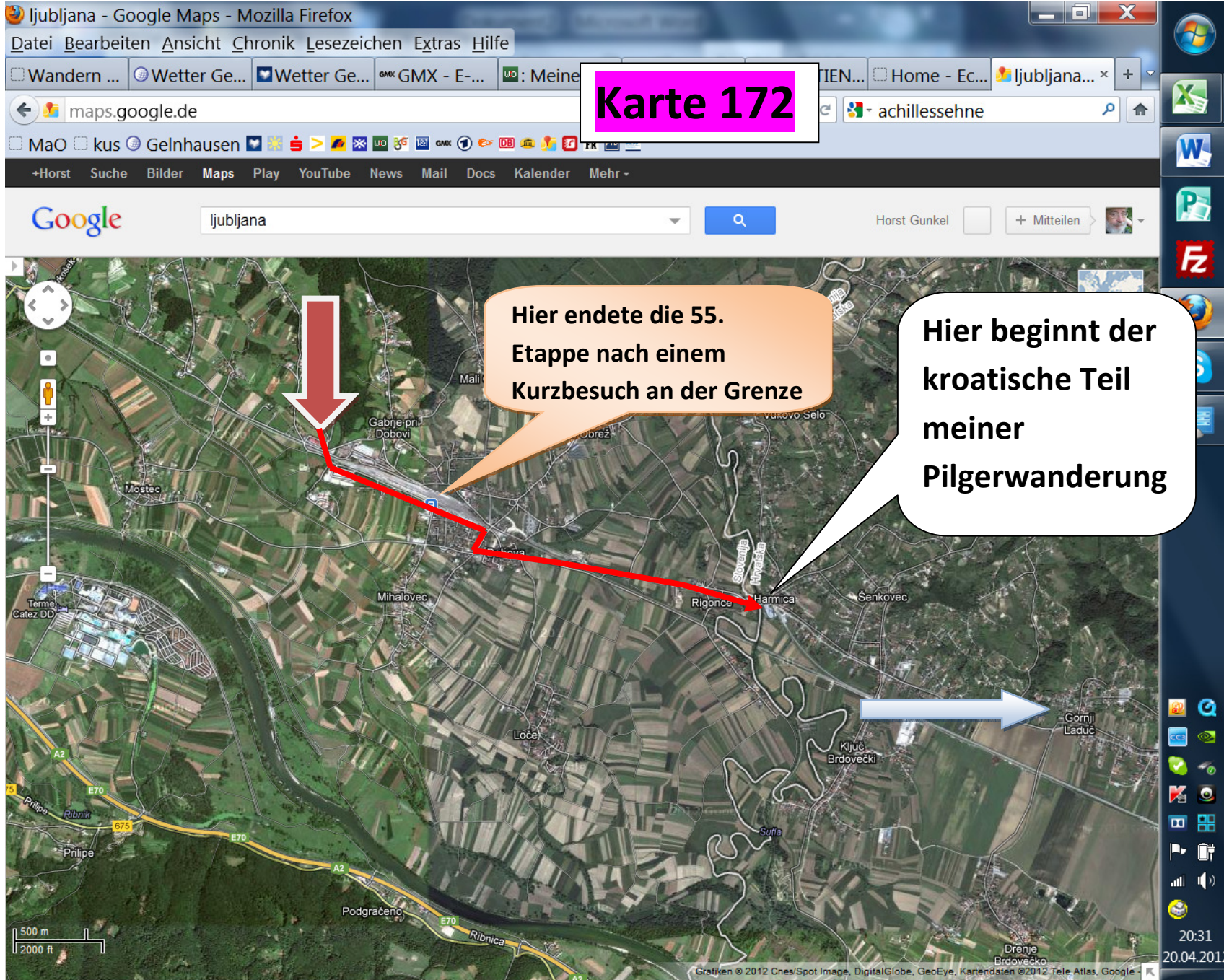
Horst Gunkel

+ Mitteilen



Karte
Fotos

Windows taskbar with icons for Internet Explorer, Word, PowerPoint, Firefox, Skype, and system tray showing time 20:30 and date 20.04.2012.



Karte 172

Hier endete die 55. Etappe nach einem Kurzbesuch an der Grenze

Hier beginnt der kroatische Teil meiner Pilgerwanderung